

“联合海工起 9” 全回转浮吊船

“LIAN HE HAI GONG QI 9” Full Revolving Floating Crane Vessel



船舶用途:

本船是一艘非自航能力的大型全回转海洋工程起重船，主要用于海洋工程、跨海大桥等大型结构物的吊装作业及海上生活支持。

Application:

LIAN HE HAI GONG QI 9, a non-propelled full revolving floating crane vessel, is mainly used for offshore engineering, cross-sea bridge and other large structures and offshore accommodation support, etc.

主要技术参数 Parameters

*船舶主尺度 Main Particulars

总长 Length	88.50	型宽 Breath	32.80m
型深 Depth	8.00m	空载吃水 Light draft	3.737m
满载吃水 Loaded draft	4.200m	最大吃水 Max draft	5.40m
满载排水量 Load displacement	10879.758t	空载排水量 Light displacement	4918.950t

压载水舱 Ballast water	7068m ³	淡水舱 Fresh water	1200m ³
燃油舱 Fuel	235m ³	滑油舱 Lubricant	20m ³
污水舱 Water sewage	30m ³	燃油污油舱	45m ³

*锚泊系统 Mooring system

工作绞车（电机驱动） Winch(Electric drive):	6*350KN+2*450KN		
工作锚 Anchor:	大抓力锚 High holding power anchor 8*7t		
工作锚缆 Mooring wire:	Φ 48mm*1100+ Φ 52mm*1100		
链锚机 Anchor machine:	3*350KN	锚 Anchor:	2*7t
锚链 Anchor Chain:	Φ 65mm, 11/13 link AM2 class		

*机械设备 Machinery Equipment

主机 Main Engine:	非自航 Non-propelled	配辅助推力 Auxiliary thruster	2*800HP
发电机组 Generator:	1*700KW/380V/50HZ; 2*400KW/380V/50HZ; 2*200KW/380V/50HZ		
停泊发电机组 Berthing generator:	1*370KW/380V/50HZ		

*通讯设备 Communication Equipment

卫星电话 Satellite:	1	电子邮件 Fax&mail:	1
NAVTEX:	1	双向无线甚高频 two-way VHF radio telephone:	3
AIS:	1		

*辅助吊机 Auxiliary crane

克令吊 Auxiliary crane:	1*12.5t	杂物吊 Sundries hook:	1*1.5t
----------------------	---------	--------------------	--------

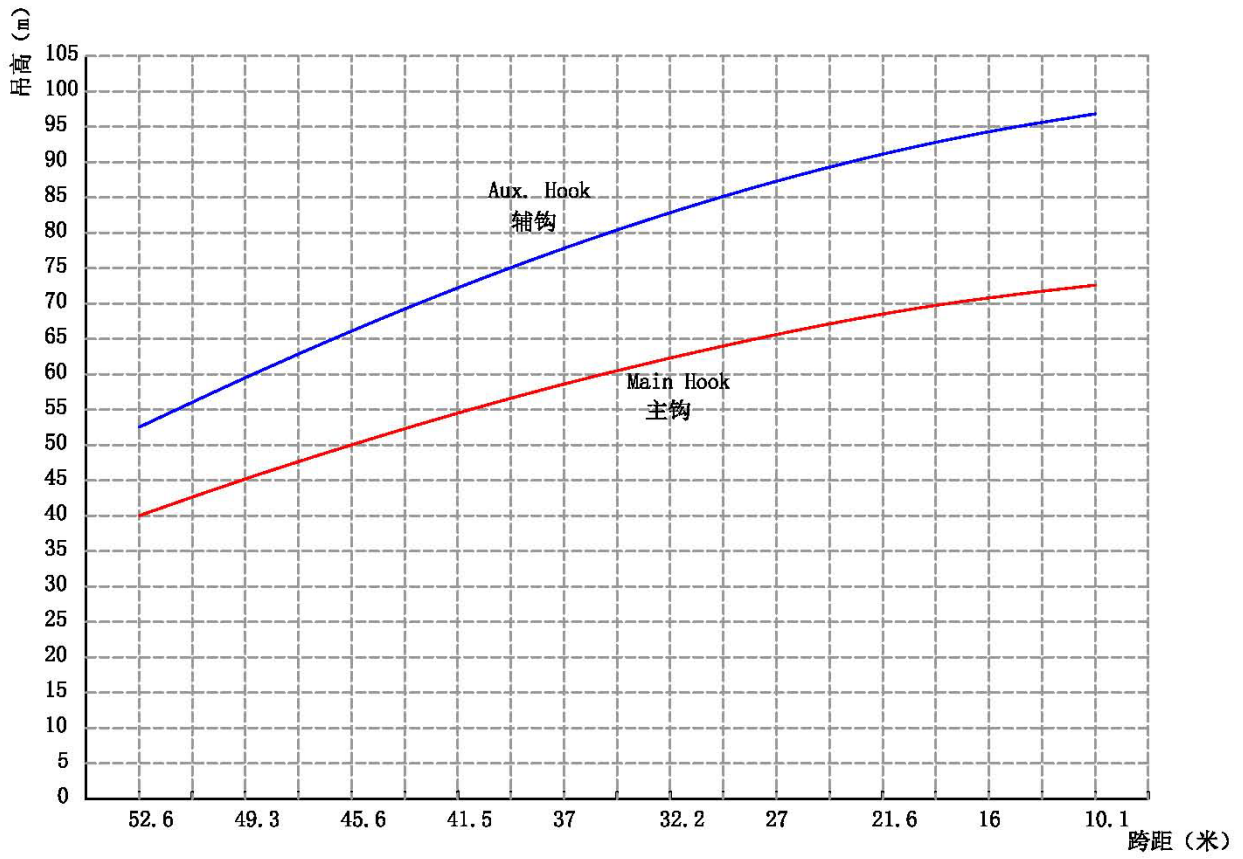
*甲板能力 Deck capacity

面积 Deck area:	1000 m ²	居住 Accommodation:	113
---------------	---------------------	-------------------	-----

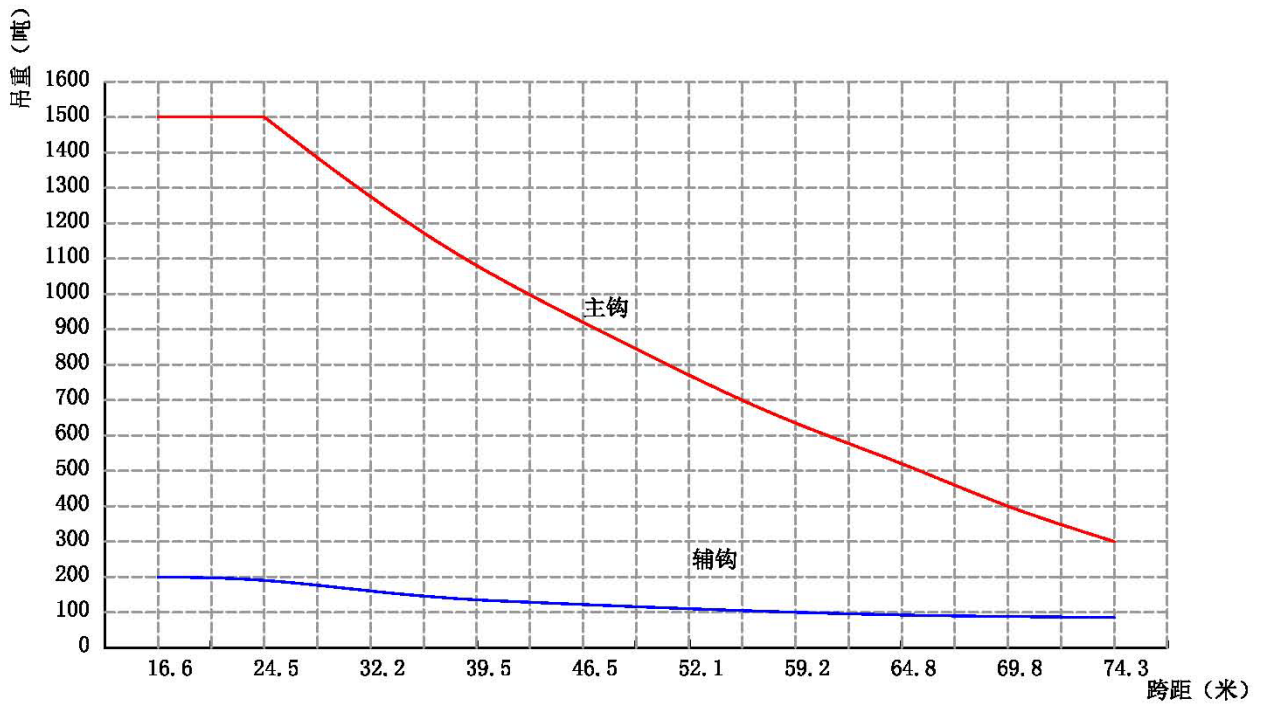
臂长 Boom Length	95m	
钩头 Hook	安全工作负荷 (T) SWL	提升速度 Hoisting Speed
主钩 Main Hook	2×750	6 m/min
副钩 Aux. Hook	1×200	10 m/min
索具钩 Rigging	1×10	18 m/min
	变幅速度 (变幅范围: 30°-75°) Luffing Speed (Range 30°-75°)	回转速度 Swiveling Speed
高速档 High	36 min	0.042 rpm (24min)
低速档 Low	48 min	0.025 rpm (40min)

		吊钩 Hook	主钩 Main Hook	副钩 Aux. Hook
项目 Item				
最大吊重 Max. Safety Work Load	固定船吊 Fixed	1500 tons	300 tons	
	全回转 Revolving	800 tons		
最大跨距 (舷外) Max. Working Radius(Outboard)		52.6 m	96.8 m	
最大吊高 (主甲板以上) Max. Lifting Height (Above Main Deck)		72.6 m	74.3 m	

吊重曲线 Lifting Curve											
	臂角 (°) Boom Angle	30	35	40	45	50	55	60	65	70	75
主钩 Main Hook	固定吊重 (T) Fixed Load	300	400	520	635	770	920	1080	1275	1500	1500
	旋转吊重 (T) Revolving Load	200	245	297	356	423	499	585	680	800	800
	跨距 (m) Working Radius	52.6	49.3	45.6	41.5	37	32.2	27	21.6	16	10.1
	吊高 (m) Lifting Height	40	45.2	50	54.5	58.6	62.3	65.6	68.5	70.8	72.6
副钩 Aux. Hook	吊重 (T) Load	85	88	92	100	110	122	135	160	190	200
	跨距 (m) Working Radius	74.3	69.8	64.8	59.2	52.1	46.5	39.5	32.2	24.5	16.6
	吊高 (m) Lifting Height	52.5	59.5	66.1	72.2	77.8	82.8	87.3	91.1	94.3	96.8



联合海工起9（吊高-跨距）曲线图



联合海工起9（吊重-跨距）曲线图